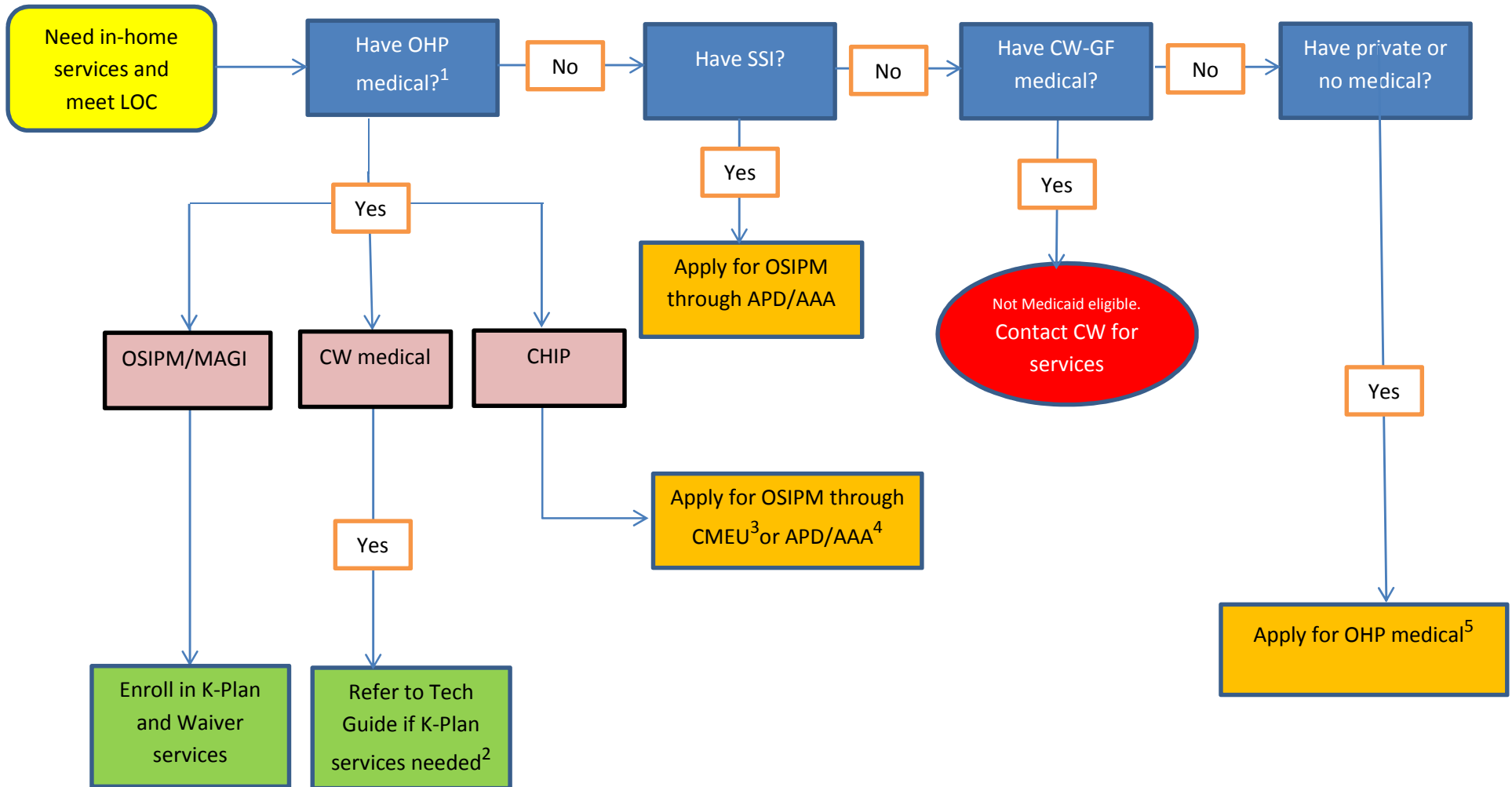


Medicaid and Pathways to K-Plan and Waiver Services



¹ See [eXPRS How to Determine TXIX Eligibility](#) document

² See [CW-DD Technical Guide](#)

³ See [CMEU-Presumptive Medicaid Overview](#) and [Presumptive Medicaid-CMEU Referrals](#) flowcharts (for age <18)

⁴ See APD Service Eligibility flowchart

⁵ Online (<http://www.oregon.gov/oha/healthplan/Pages/apply.aspx>) or pick up OHP application at local Self Sufficiency, or APD/AAA office